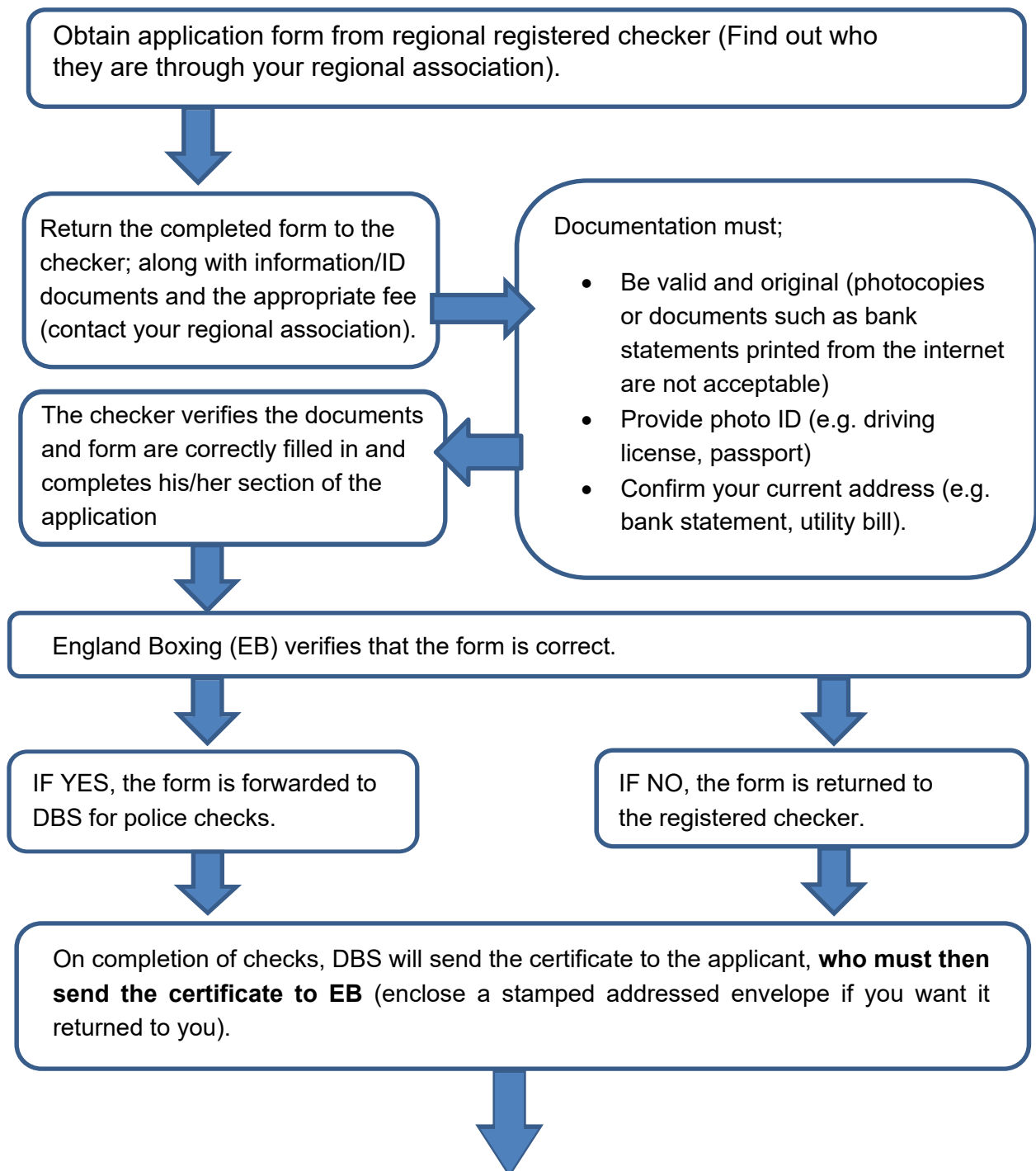


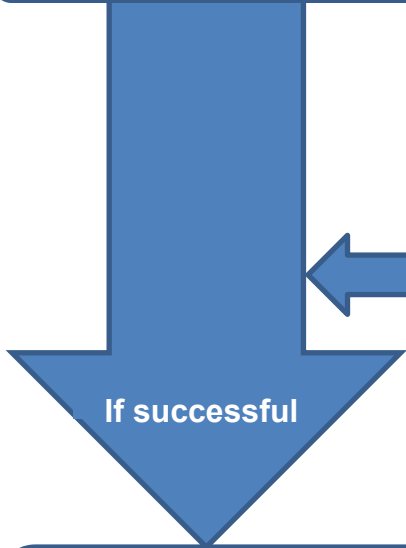


DBS APPLICATION PROCESS



Continued on next page.

EB completes a first stage risk assessment.



EB enter DBS on database. Regional Registrar has access. Subject has DBS accreditation for three years



The certificate is sent to the EB DBS panel for a second stage assessment.



If turned down by the EB DBS panel, the applicant may appeal. They must apply to the EB National Compliance Manager and deposit £250 with England Boxing. This is refundable if the appeal is successful. (Refer to the EB DBS procedures)

